

# High Performance Color Coating Systems

Building  
Envelope  
Design  
Solutions



# Standard Colors

## Weather XL – Siliconized Modified Polyester (SMP)

WEATHER XL coating systems utilize only ceramic and inorganic pigments offering superior color stability, chalk and fade resistance as well as gloss retention.

### SMP



Driftwood  
SR:0.55 E:0.86 SRI:64

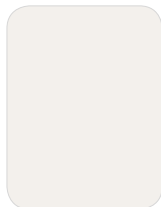


Sandstone  
SR:0.49 E:0.86 SRI:56

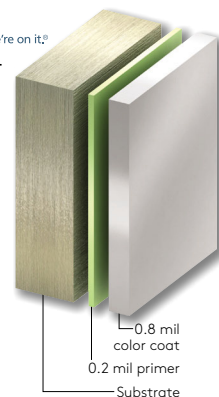


Surrey Beige  
SR:0.41 E:0.86 SRI:45

### MP (Modified Polyester)



Imperial White  
SR:0.62 E:0.86 SRI:74



## Solid Fluropon® PVDF Colors – Kynar 500® / Hylar 5000

Fluropon coatings are durable polyvinylidene coating system containing 70% Kynar or Hylar resins, ceramic and other inorganic pigments. This system provides a powerful chemical bond, superior resistance to ultraviolet radiation resulting in exceptional color retention, resistance to chalking and chemical degradation.

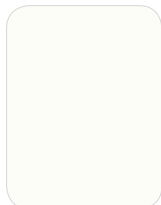
### Category 1



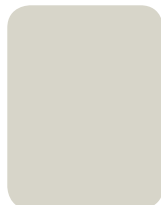
Regal White  
SR:0.70 E:0.86 SRI:85



Ascot White  
SR:0.69 E:0.85 SRI:83



Bone White  
SR:0.69 E:0.84 SRI:83



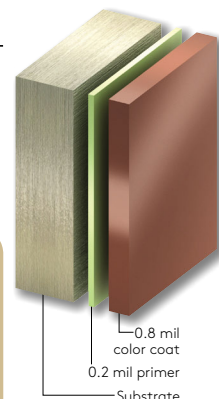
Driftwood  
SR:0.45 E:0.86 SRI:50



Sandstone  
SR:0.61 E:0.85 SRI:72



Surrey Beige  
SR:0.48 E:0.86 SRI:54



### Category 2



Dove Gray  
SR:0.47 E:0.86 SRI:53



Zinc Gray  
SR:0.35 E:0.86 SRI:37



Rawhide  
SR:0.55 E:0.85 SRI:64



Parchment  
SR:0.53 E:0.85 SRI:61



Rock Tan  
SR:0.62 E:0.86 SRI:74



Taupestone  
SR:0.27 E:0.86 SRI:26



Spartan Bronze  
SR:0.31 E:0.85 SRI:31



Redwood  
SR:0.38 E:0.86 SRI:41



Slate Blue  
SR:0.28 E:0.85 SRI:27

### Category 3



Colonial Red  
SR:0.32 E:0.86 SRI:33



Evergreen  
SR:0.26 E:0.85 SRI:24



Regal Blue  
SR:0.26 E:0.85 SRI:24



Tahoe Blue  
SR:0.26 E:0.85 SRI:24

**SR (Solar Reflectivity)** This is the ability of a material to reflect solar energy back into the atmosphere. Rated on a scale from 0 to 1, where 1 is the most reflective.

**E (Emissivity)** Emissivity is the ability of the material to release absorbed energy back into the atmosphere. Rated on a scale from 0 to 1, where 1 is the most emissive.

**SRI (Solar Reflective Index)** This is used to determine compliance with LEED® requirements and is calculated according to ASTM E 1980 using values for reflectance and the materials ability to release absorbed energy (emissivity) in medium wind speed conditions. Rated on a scale from 0 to 1, where 1 is the most reflective.

# Premium Colors

## Mica Fluropon Classic® II PVDF Colors

The coating system consists of a special primer and a durable color coat containing mica pearlescent flakes. Due to the orientation of aluminum/pearlescent flake pigments during application, the appearance will be directional in nature on metallic coatings.



Silversmith  
SR:0.53 E:0.79 SRI:59



Zinc  
SR:0.55 E:0.79 SRI:62



Champagne Pearl  
SR:0.48 E:0.81 SRI:53



Champagne Bronze  
SR:0.44 E:0.78 SRI:46



Weathered Zinc  
SR:0.33 E:0.84 SRI:33



Copper Penny  
SR:0.48 E:0.84 SRI:54



## Metallic Fluropon Classic® PVDF Colors

Metallic coatings employ metal flakes in the color coat. The system uses a special primer, a 70% Kynar 500® or Hylar 5000® resin based Fluropon color coat and a clear topcoat, to provide outstanding color and gloss retention, increased abrasion resistance and added protection against atmospheric contaminants.



Bright Silver  
SR:0.57 E:0.81 SRI:65



Rosalind Rose  
SR:0.34 E:0.88 SRI:36



Champagne Gold  
SR:0.51 E:0.85 SRI:58



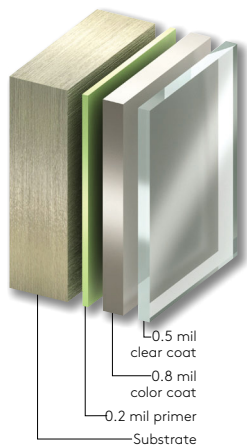
Pewter  
SR:0.31 E:0.86 SRI:31



Medium Bronze  
SR:0.19 E:0.85 SRI:15



Dark Bronze  
SR:0.12 E:0.83 SRI:5



# Granitstone®

## Granitstone® Panel Colors

Granitstone® coatings have an oven-baked epoxy primer and a factory applied finish of an air-dried 100% acrylic bonder with natural silica aggregate, minimum 12 mils dry film thickness, finished to resemble sprayed stucco.

### Granitstone®



Imperial White



Bone White



Sandstone



Parchment



Rawhide



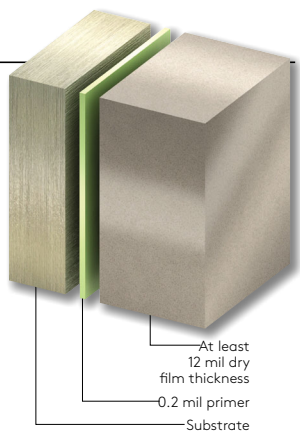
Surrey Beige



Taupestone



Dove Gray



### Granitstone® Quartz



Teton Gray



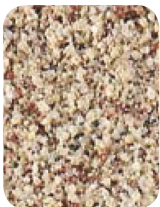
Foxwood Beige



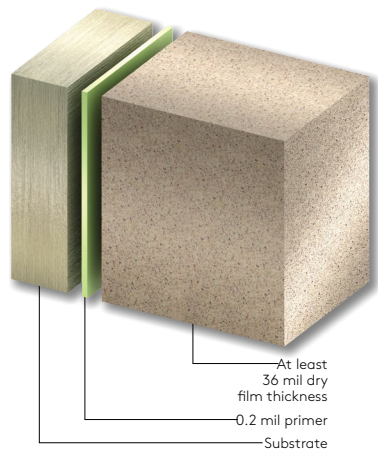
Dakota Bronze



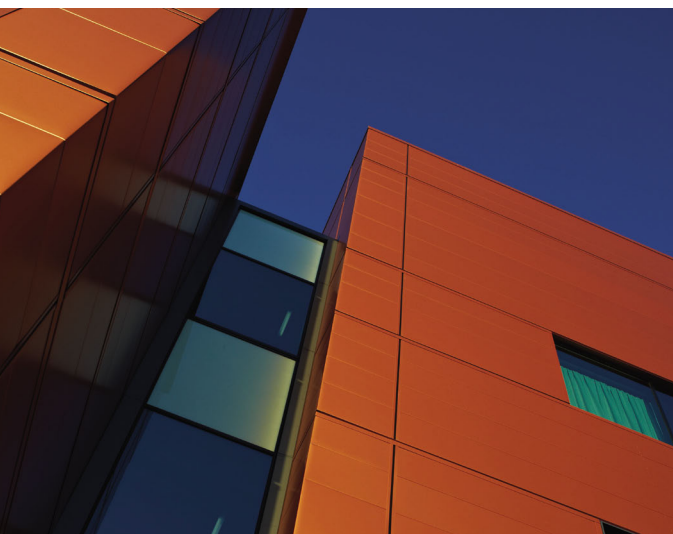
Cascade Sand



Monterey Gold







Kingspan offers a full spectrum of vibrant colors for every color scheme. The high performance coatings provide long-life protection, color and gloss retention. Custom color matching is available to meet individual building designs and creative freedom.



#### Kingspan USA

Deland, FL; 386-626-6789  
Modesto, CA; 209-531-9091  
Columbus, OH; 614-444-0110

#### Kingspan Canada

Caledon, ON; 905-951-5600  
Langley, BC; 604-607-1101



[www.kingspanpanels.com](http://www.kingspanpanels.com)